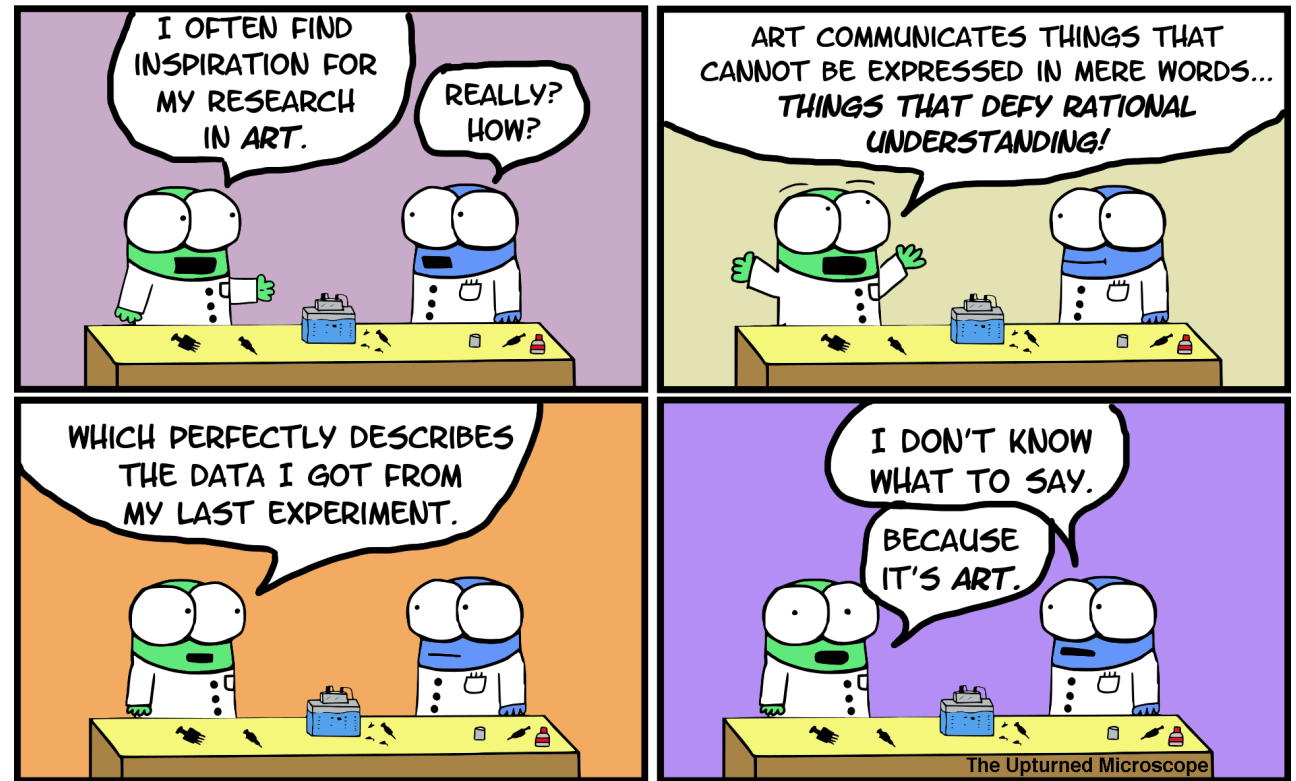


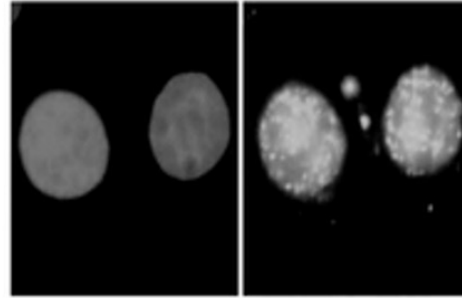
M1D4: Complete data analysis for γ H2AX experiment

1. Prelab
2. Image analysis for γ H2AX assay
3. Paper discussion with Noreen
4. Make a CometChip



Mod1 Overview

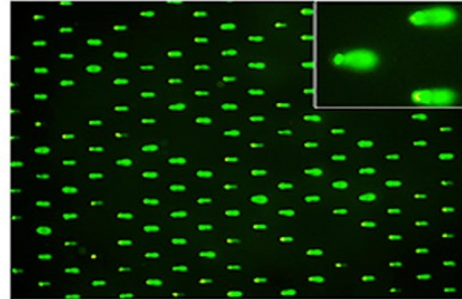
Last lab:



1. Use repair foci experiment to measure DNA breaks

- Examine effect of H_2O_2 +/- As on double strand DNA breaks by measuring γ H2AX foci formation

This lab:



2. Use high-throughput genome damage assay to measure DNA damage

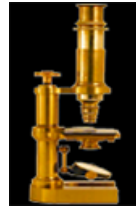
- Measure effects of H_2O_2 +/- As on DNA damage by measuring DNA migration in agarose matrix

Next lab:

Notes on bias in images

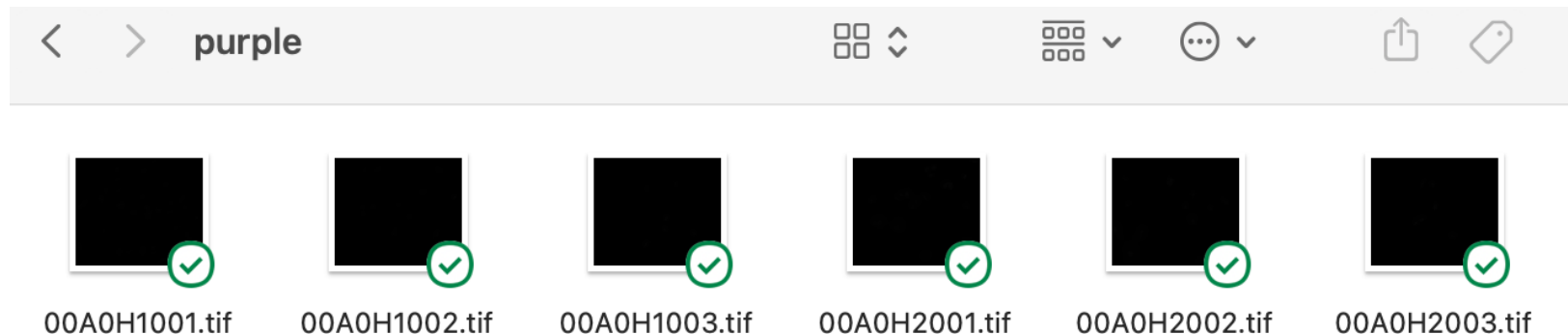
- Data can be skewed dramatically by bias (conscious or unconscious)
- Microscopy images are vulnerable to this because they are often used as representative of a much larger population
- How do we mitigate bias when taking and analyzing images?
 - Blind imaging or analysis
 - Set parameters ahead of time (i.e. select images randomly in the DAPI channel without looking at H2AX staining)

How will you analyze your images for the Data Summary?

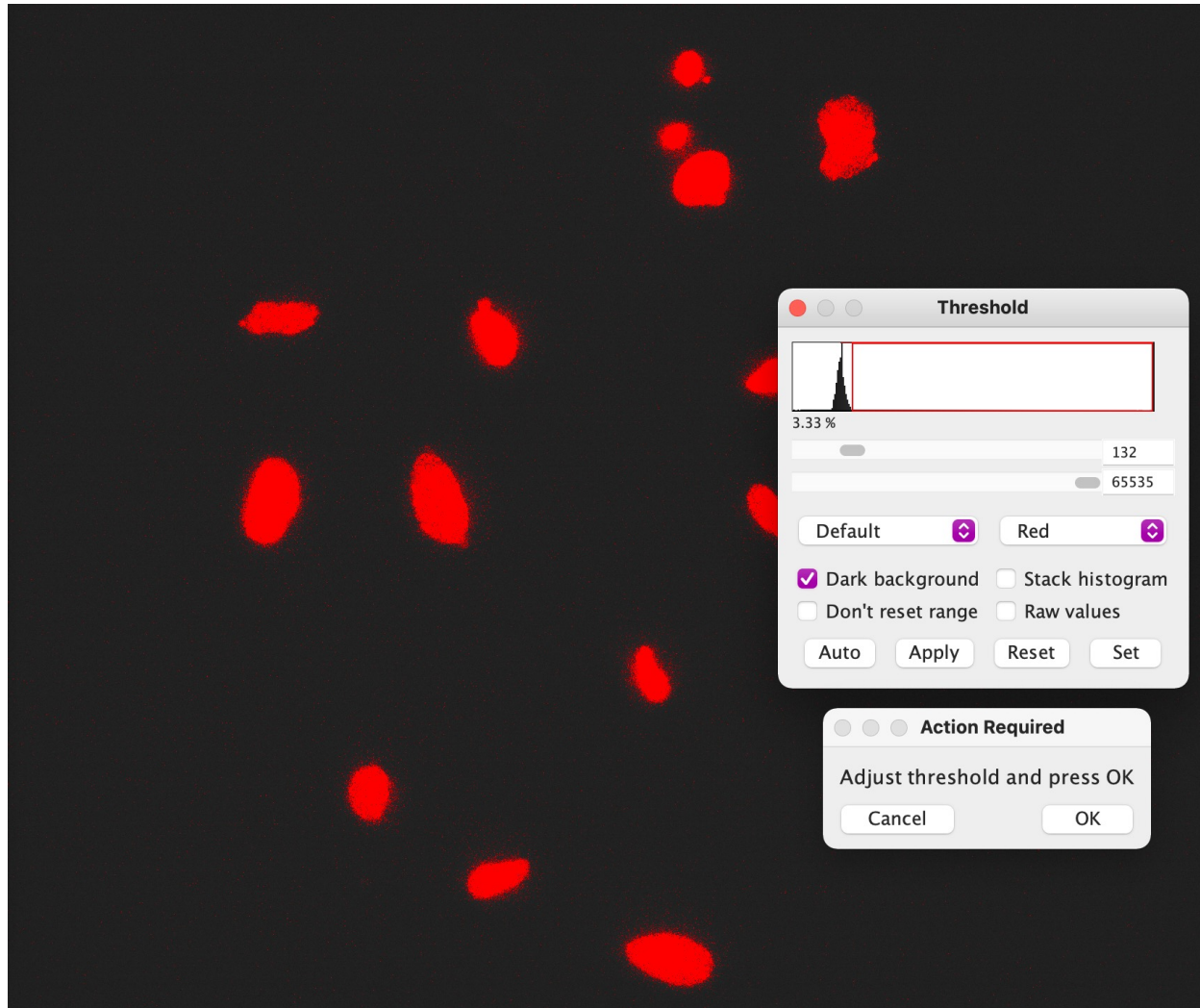


ImageJ
Image Processing & Analysis in Java

- Use macro developed by Joshua Corrigan in Engelward lab
 - The DAPI channel used to create a "mask" of the nuclei
 - Gamma-H2AX foci are identified by pixel maxima readings in the FITC channel
 - You will be able to compare you "by eye" assessment of punctae to the count identified by the program
 - Average the number of foci per nuclei per image to get data point

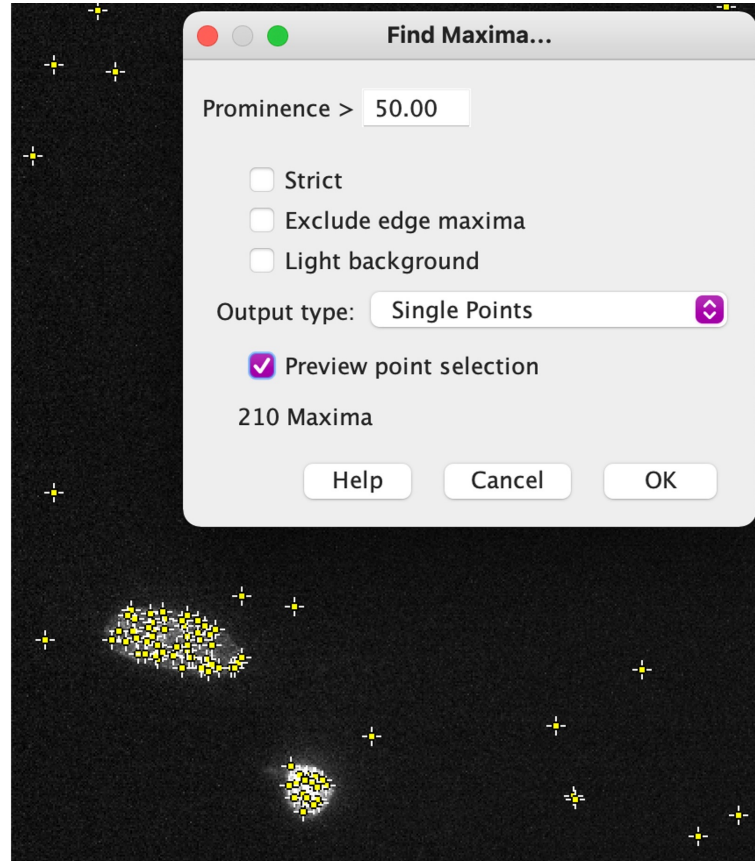
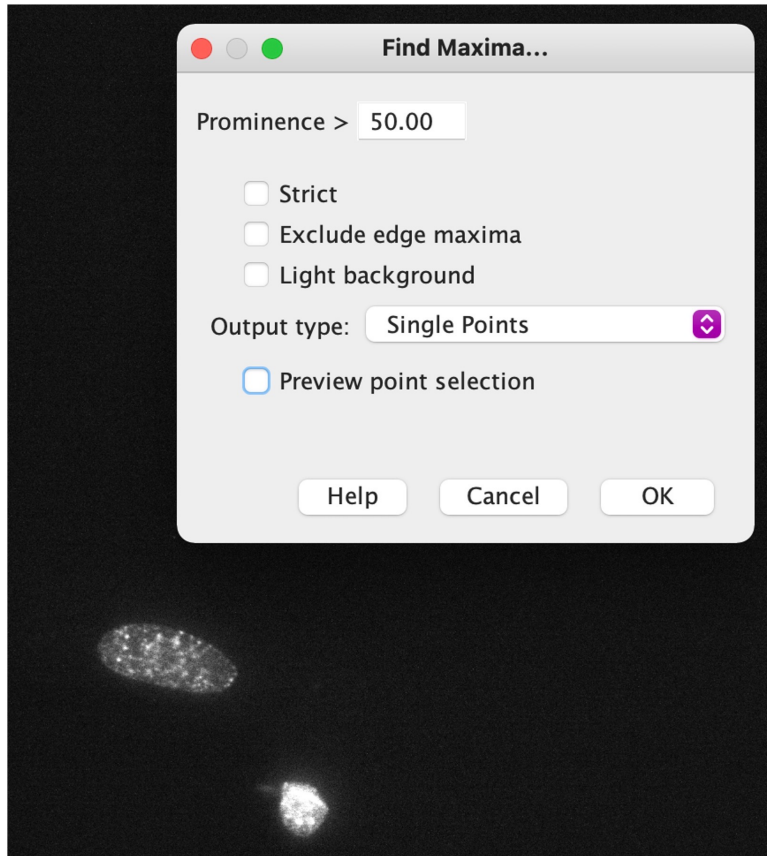


Set nuclei threshold to create region of interest to count foci



- Adjust threshold to capture discrete nuclei
 - May not be perfect!
- Program will also watershed the images to separate nuclei that are close together

Set prominence for the FITC/488 channel image



- Find a prominence setting that allows most visible foci to be counted in the control condition
 - Select output of Single Points
 - Check Preview point selection

Compile results in Excel

Results							
	Label	Area	Mean	Min	Max	Circ.	IntDen
1	5H10As_40x__117-0002 Maxima:0004-0548	5972	0.000	0	0	0.267	0
2	5H10As_40x__117-0002 Maxima:0005-0630	8132	0.000	0	0	0.287	0
3	5H10As_40x__117-0002 Maxima:0007-0936	9354	0.000	0	0	0.359	0
4	5H10As_40x__117-0002 Maxima:0009-1017	8844	0.000	0	0	0.321	0
5	5H10As_40x__117-0002 Maxima:0013-1653	12860	0.000	0	0	0.412	0
6	5H10As_40x__117-0002 Maxima:0014-1681	9359	0.000	0	0	0.264	0
7	5H10As_40x__117-0002 Maxima:0017-2047	10956	0.000	0	0	0.423	0
8	5H10As_40x__117-0002 Maxima:0002-0252	8709	0.029	0	255	0.326	255
9	5H10As_40x__117-0002 Maxima:0008-1004	21650	0.012	0	255	0.371	255
10	5H10As_40x__117-0002 Maxima:0015-1952	8416	0.030	0	255	0.301	255
11	5H10As_40x__117-0002 Maxima:0001-0230	9846	0.052	0	255	0.495	510
12	5H10As_40x__117-0002 Maxima:0003-0307	10179	0.050	0	255	0.295	510
13	5H10As_40x__117-0002 Maxima:0006-0938	13402	0.038	0	255	0.233	510
14	5H10As_40x__117-0002 Maxima:0011-1481	13157	0.058	0	255	0.260	765
15	5H10As_40x__117-0002 Maxima:0010-1038	14512	0.176	0	255	0.229	2550
16	5H10As_40x__117-0002 Maxima:0016-1983	15859	0.338	0	255	0.325	5355
17	5H10As_40x__117-0002 Maxima:0012-1541	24834	0.226	0	255	0.354	5610

- Results should have a Max of 0 or 255
- Integrated Density should be in multiples of 255

Data analysis required for Data Summary

- Complete the analysis of images in all conditions (3 replicates from your team and 3 replicates from instructors)
 - Divide the work amongst your lab team!
- Once the numbers are recorded, take the average number of foci for each image (i.e. treat each image as $n=1$)
 - This is a special circumstance for this class!
 - Statistics are another lab session
- The average number of foci in each treatment condition will become a figure in the Data Summary

After the analysis is done, feel free to explore the images/data!

- If you have time and interest, feel free to explore other aspects of the images (once you have established your baseline data using the wiki parameters)

Look at any differences in DAPI staining
Is there any relationship between DAPI intensity and foci number?

Play around with threshold and prominence settings
What effect does changing analysis parameters have on the numbers generated?

- Note: Only the original analysis (average # of foci under a single prominence) should be used in your Data Summary

In lab today:

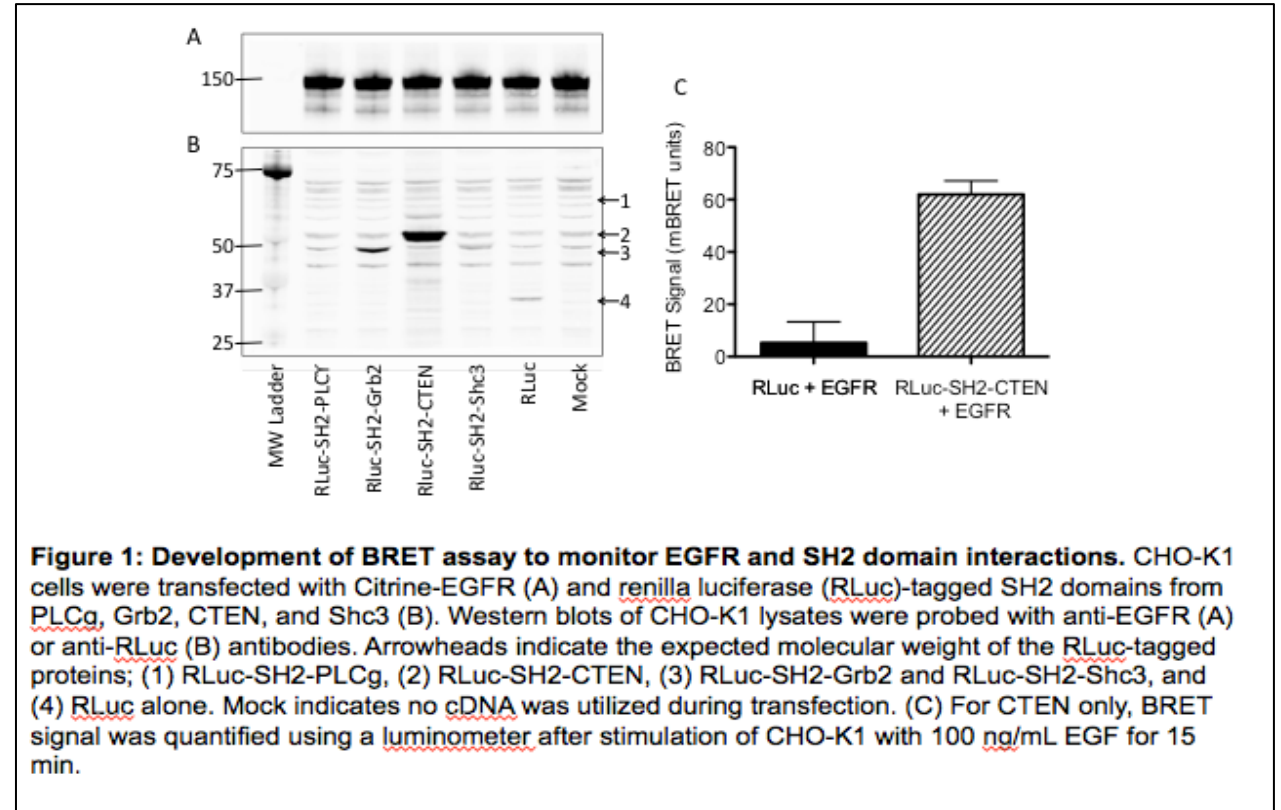
1. Work on image analysis until 3pm
2. Paper discussion from 3-3:45ish
3. Demo on creating the CometChip gel
4. Work in teams to pour CometChip gels

HW due M1D5

1. Create a data figure of H2AX results with title and caption
2. Visit Comm Lab before M1D5.

Data figure example

- Image **should not** be the entire page
 - Only needs to be large enough to be clear / visible
 - 1/3 – 1/2 of a page in portrait orientation
- Title **should be** conclusive
 - Don't include what you did, rather state what you found (take home message)
- Caption **should not** detail the methods or interpret the data
 - Define abbreviations, symbols, etc.
 - Info needed to “read” figure
 - Figure captions with multiple panels need to start with a topic sentence



Data Summary =
pptx file with slides set at 8.5 x 11" portrait