

alpha Tubulin Polyclonal Antibody

Catalog number: 11224-1-AP

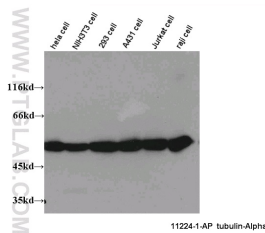
Size: 23 µg/150 µl

Source: Rabbit

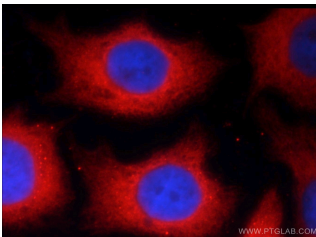
Isotype: IgG

Synonyms:

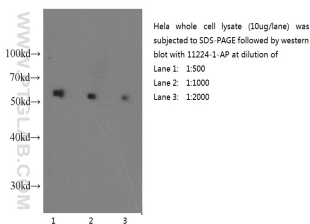
TUBA1B; alpha Tubulin, Alpha tubulin ubiquitous, alpha tubulin, a tubulin, TUBA1B, tubulin, tubulin, alpha 1b



Western blot on multiple cells with anti-Tubulin-Alpha (11224-1-AP) at dilution 1:1,000.



Immunofluorescent analysis of MCF-7 cells using 11224-1-AP (Tubulin-Alpha Antibody) at dilution of 1:25 and Rhodamine-Goat anti-Rabbit IgG



Western blot of HeLa cell with anti-Tubulin-Alpha (11224-1-AP) at various dilutions.

Background

There are five tubulins in human cells: alpha, beta, gamma, delta, and epsilon. Tubulins are conserved across species. They form heterodimers, which multimerize to form a microtubule filament. An alpha and beta tubulin heterodimer is the basic structural unit of microtubules. The heterodimer does not come apart, once formed. The alpha and beta tubulins, which are each about 55 kDa MW, are homologous but not identical. Alpha, beta, and gamma tubulins have all been used as loading controls. Tubulin expression may vary according to resistance to antimicrobial and antimitotic drugs.

Applications

Tested applications:	ELISA, WB, IP, IHC, IF, FC
Cited applications:	IF, WB
Species specificity:	Human, Mouse, Rat; other species not tested.
Cited species:	Human, mouse, rat
Calculated alpha Tubulin MW:	50 kDa
Observed alpha Tubulin MW:	52kd
Positive WB detected in	Multi-cells/tissue, HeLa cells, mouse brain tissue, mouse colon tissue, mouse eye tissue, mouse liver tissue, mouse lung tissue, mouse uterus tissue, rat brain tissue
Positive IP detected in	HeLa cells
Positive IHC detected in	Human colon cancer tissue, human endometrial cancer tissue, human liver cancer tissue
Positive IF detected in	MCF-7 cells, HeLa cells
Positive FC detected in	HEK-293 cells
Recommended dilution:	WB: 1:500-1:5000 IP: 1:500-1:5000 IHC: 1:20-1:200 IF: 1:10-1:100 FC: N/A

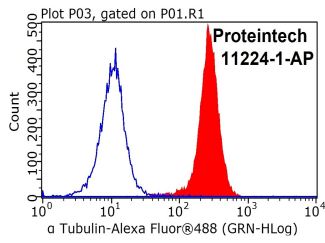
Application key: WB = Western blotting, IHC = Immunohistochemistry, IF = Immunofluorescence, IP = Immunoprecipitation

Immunogen information

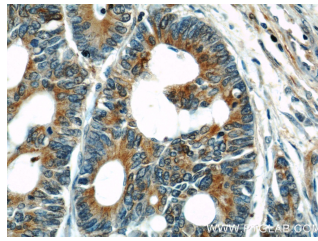
Immunogen:	Ag1727
GenBank accession number:	BC009314
Gene ID (NCBI):	10376
Full name:	Tubulin, alpha 1b

Product information

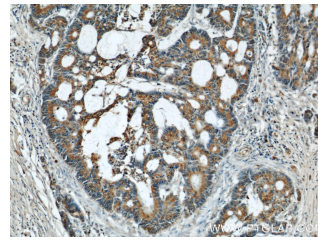
Purification method:	Antigen affinity purification
Storage:	PBS with 0.1% sodium azide and 50% glycerol pH 7.3. Store at -20°C.



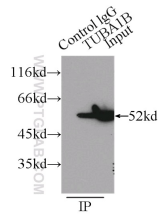
1X10⁶ HEK-293 cells were stained with 0.2ug Tubulin-Alpha antibody (11224-1-AP, red) and control antibody (blue). Fixed with 90% MeOH blocked with 3% BSA (30 min). FITC-Goat anti-Rabbit IgG with dilution 1:100.



Immunohistochemical of paraffin-embedded human colon cancer using 11224-1-AP (Tubulin-Alpha antibody) at dilution of 1:50 (under 40x lens)



Immunohistochemical of paraffin-embedded human colon cancer using 11224-1-AP (Tubulin-Alpha antibody) at dilution of 1:50 (under 10x lens)



IP Result of anti-Tubulin-Alpha (IP:11224-1-AP, 3ug; Detection:11224-1-AP 1:1000) with HeLa cells lysate 5000ug.