

# M2D I: System Design

---

10/8/13

1. Writing visit from Leslie
2. Safety visit from Marissa
3. Short pre-lab discussion
4. EGFR signaling pathway simulation
5. Pick your inhibitor!
6. Mock inhibitor study

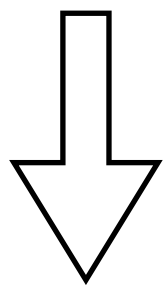
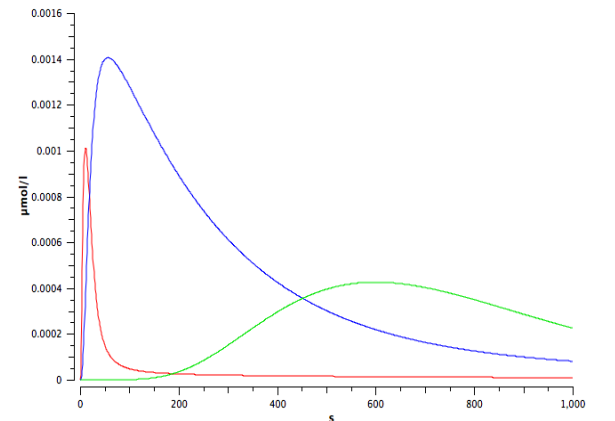
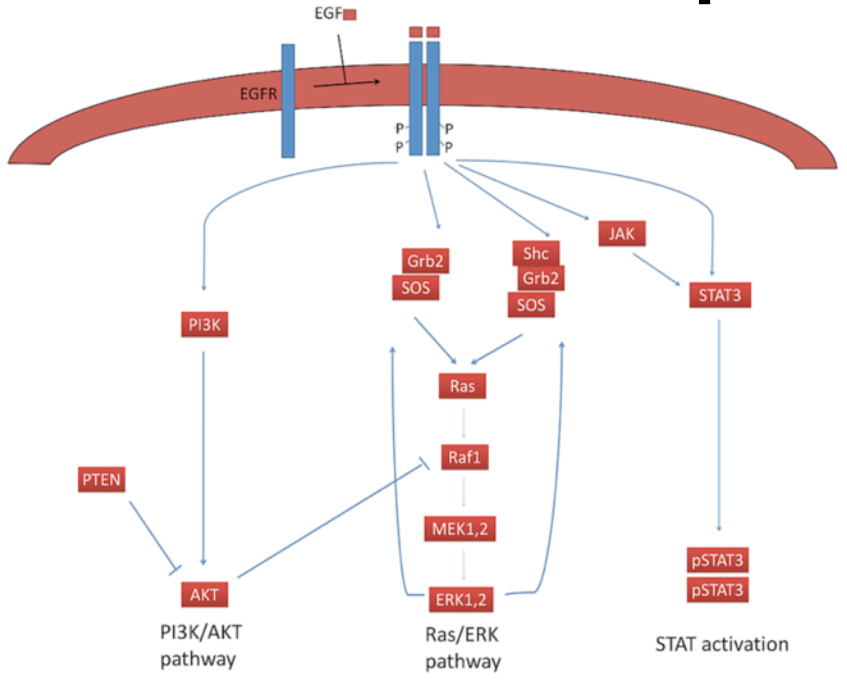
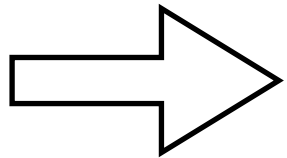
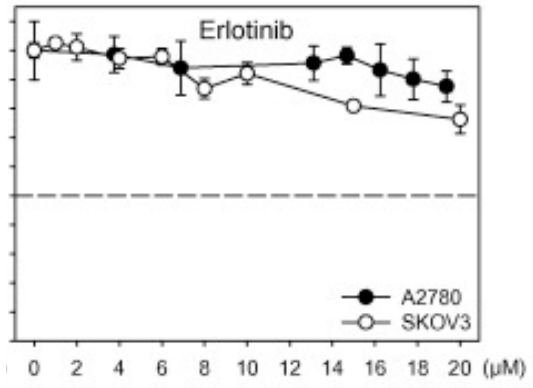
A few announcements: GH Wed 7-8pm here in lab

1. Mod I: Abstract + Data Summary due Thursday at 11am
2. Mod I: Methods return target is M2D3
3. Check your schedule -- Journal Club time!
4. Plan ahead: M2D4 is long (no more surprises)

# Module 2 overview:

## Explore the system:

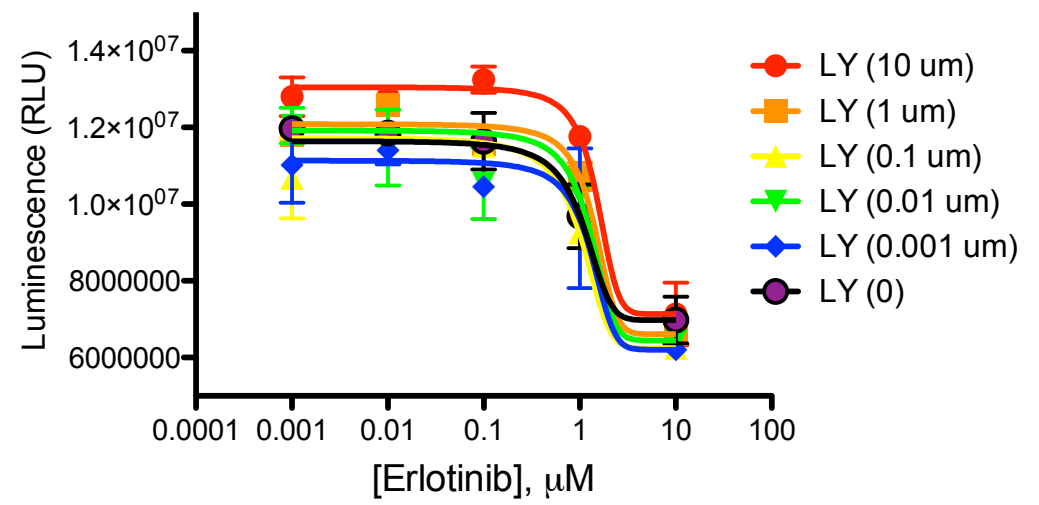
### Define the problem:



Grunt et al. Biochem. Biophys. Res. Commun. 385:454-459(2009)

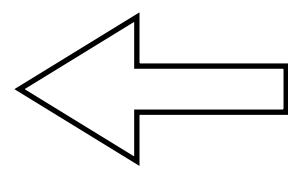
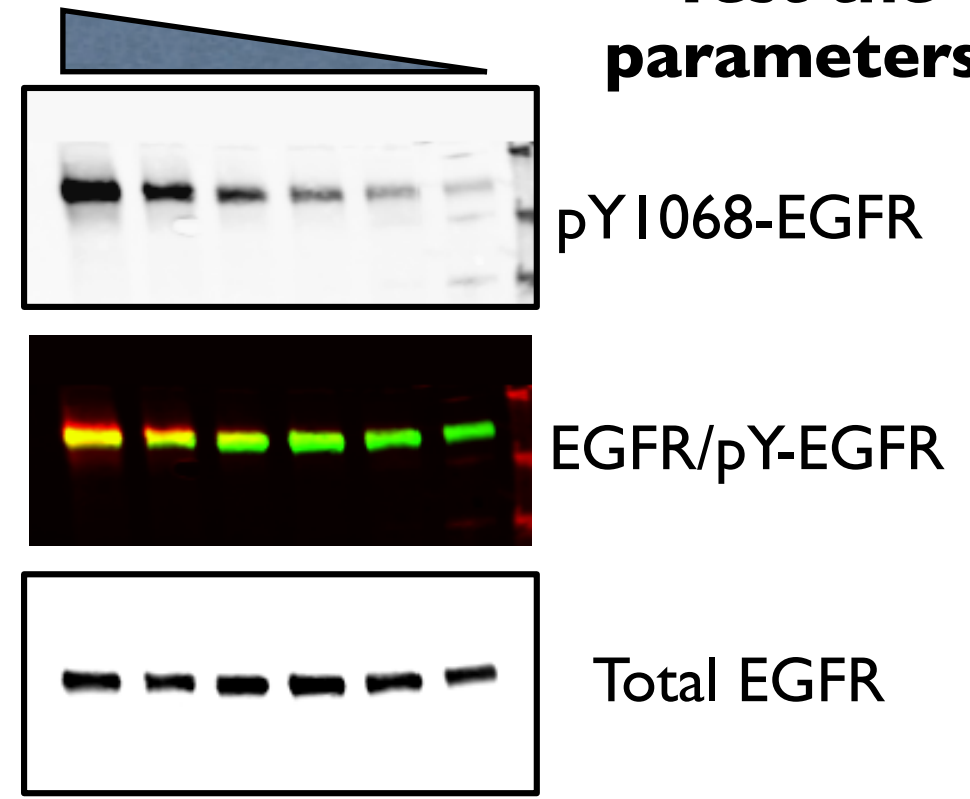
Bidkhor G, Moeini A, Masoudi-Nejad A .PLoS ONE 7(10): (2012)

### Test our hypothesis:



### Test the parameters:

Increasing [EGF]



## Today in the lab:

- EGFR simulations -- if you run into trouble, let us know right away!

*Normal, Increased EGFR, (no PTEN -- if time)*

- We have 6 multi-channel pipettes -- stagger your start (a few may choose to start right away)

## Next time in the lab:

- Choose JC day & paper (list will be finalized on Thursday AM)
- EGFR mutation analysis by PCR and sequencing
- Learn how to present the research of others