

SKH slides -
thanks!

M2D I: System Design

10/8/13

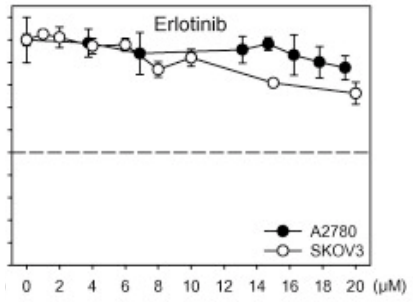
1. Writing visit from Leslie OH ANS R 5-6P
16-336
(by appt, saw 12-3ish)
2. Safety visit from Marissa SKH W 7-8P
56-322
3. Short pre-lab discussion + Hi, Kim!!
4. EGFR signaling pathway simulation
5. Pick your inhibitor!
6. Mock inhibitor study

A few announcements:

1. Mod I: Abstract + Data Summary due ~~Thursday~~ at 11am
Friday
11A
2. Mod I: Methods return target is M2D3
3. Check your schedule -- Journal Club time!
D5+D8
4. Plan ahead: M2D4 is long (no more surprises)

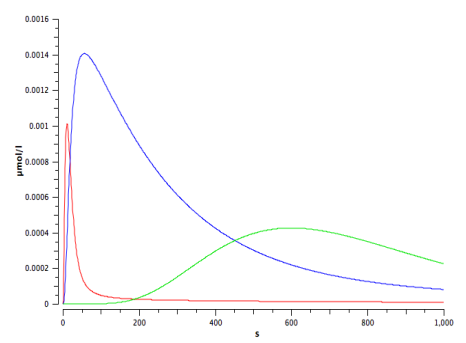
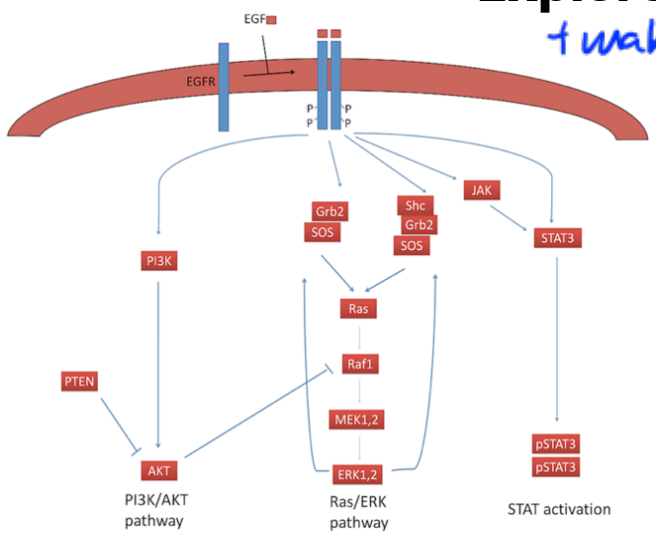
Module 2 overview:

Define the problem:



← M2 by SKH + science! →

Explore the system: D1
+ wake choice b/w 3 inhibitors

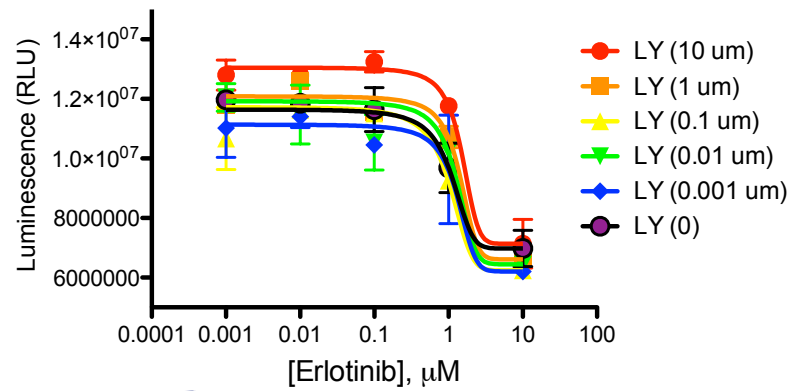


Grunt et al. Biochem. Biophys. Res. Commun. 385:454-459(2009)

Bidkhorri G, Moeini A, Masoudi-Nejad A .PLoS ONE 7(10): (2012)

Test our hypothesis:

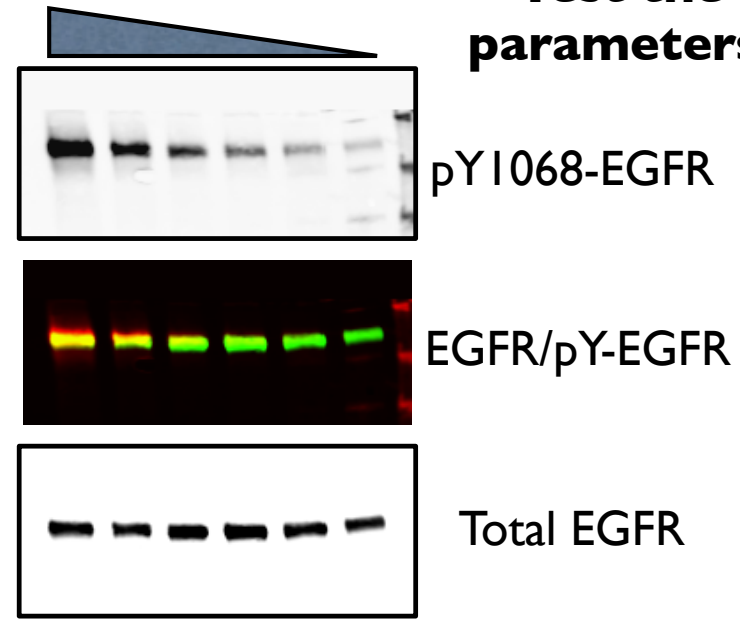
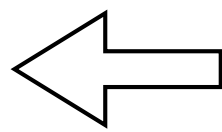
robot! :)



HIS cell viability co-inhibition

P Western EGFR + ds target
Increasing [EGF]

D2+
Test the parameters:



Today in the lab:

- EGFR simulations -- if you run into trouble, let us know right away!

Normal, Increased EGFR, (no PTEN – if time)

- We have 6 multi-channel pipettes -- stagger your start (a few may choose to start right away)

prep for D6

Next time in the lab:

- Choose JC day & paper (list will be finalized on Thursday AM)
- EGFR mutation analysis by PCR and sequencing
- Learn how to present the research of others